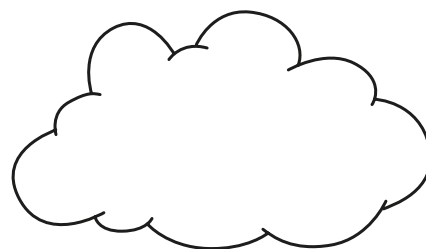
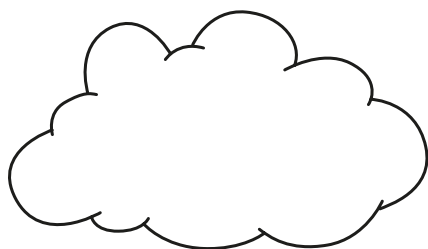
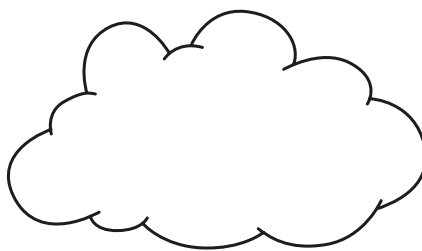


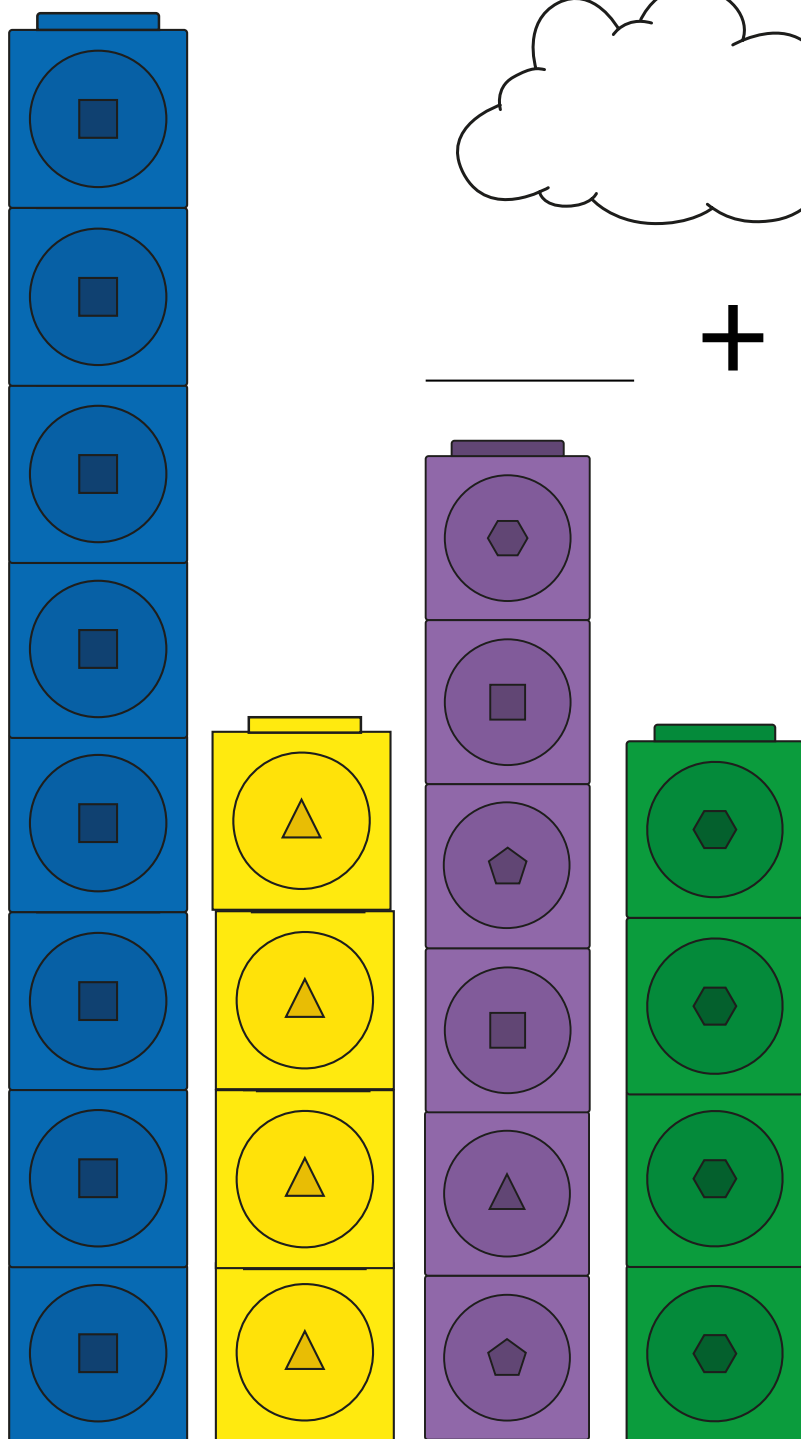
# Activity Sheets



+

=

\_\_\_\_\_



Early arithmetic:  
addition, subtraction,  
division and  
multiplication

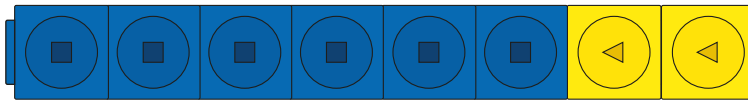
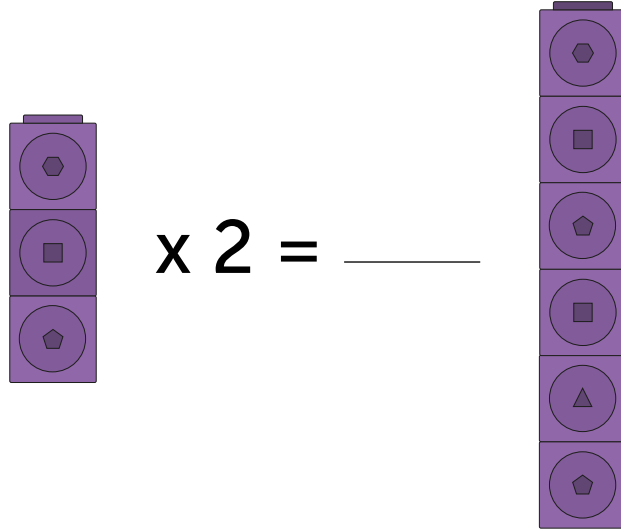
## Ages 3 - 8

# MathLink® Activity 1

Ages 3 - 8

Early arithmetic: addition, subtraction and multiplication

---



$$\underline{\hspace{2cm}} + \underline{\hspace{2cm}} = \underline{\hspace{2cm}}$$



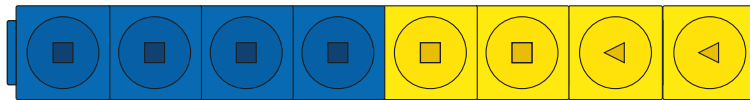
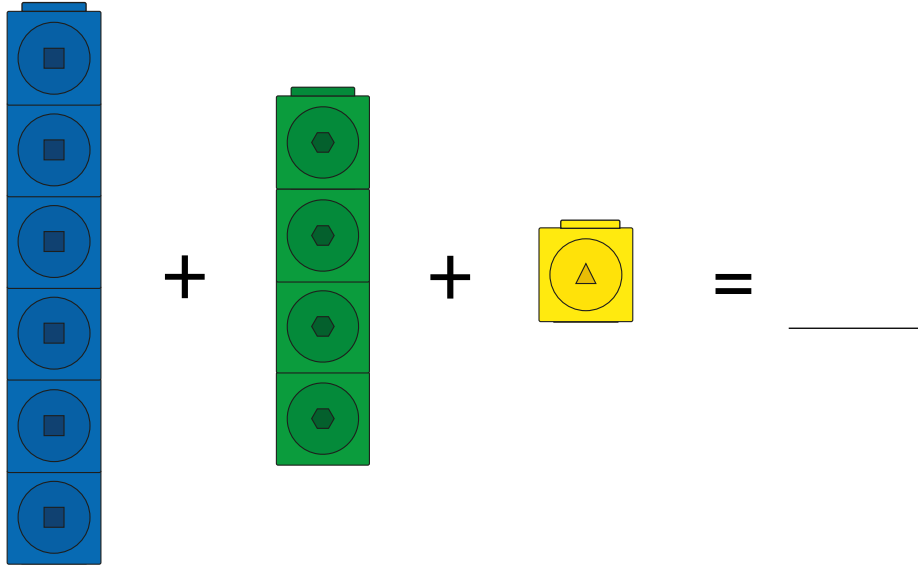
$$\underline{\hspace{2cm}} = 10 - \underline{\hspace{2cm}}$$

# MathLink® Activity 2

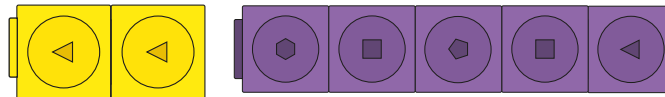
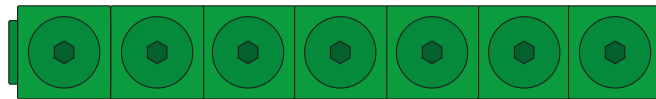
Ages 3 - 8

Early arithmetic: addition, subtraction and multiplication

---



$$8 - \underline{\quad} = \underline{\quad}$$



$$\underline{\quad} + \underline{\quad} = \underline{\quad}$$

---

# MathLink® Activity 3

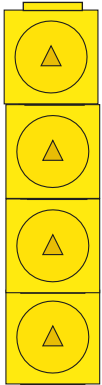
Ages 3 - 8

Early arithmetic: division

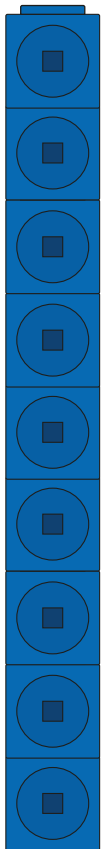
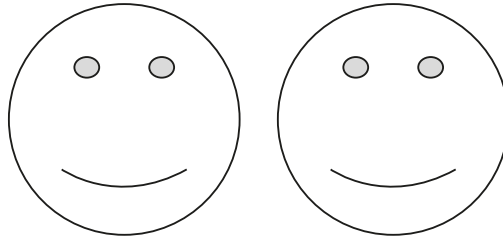
---

See how many cubes you could divide by placing them in the images

(No Cubes? - use household objects like pieces of dried pasta, bottle tops etc)



÷



÷

